

# VIVEZA<sup>®</sup> 2 Precise Selective Photo Editing

## Lesson 2: Correcting A Color Cast Selectively

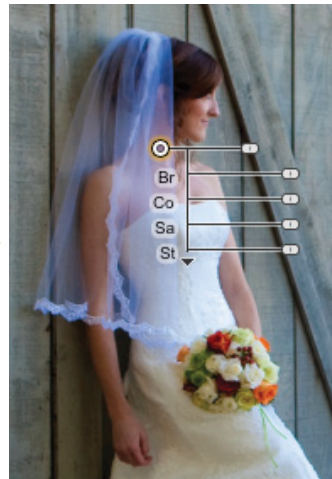
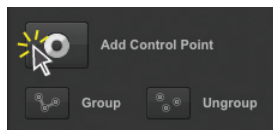
Color casts can sometimes occur only in a portion of an image. This may be due to a bright colored object that was just off camera and reflecting light into the scene or due a mixture of light coming from different sources. This lesson covers how to selectively reduce color casts using color control points.



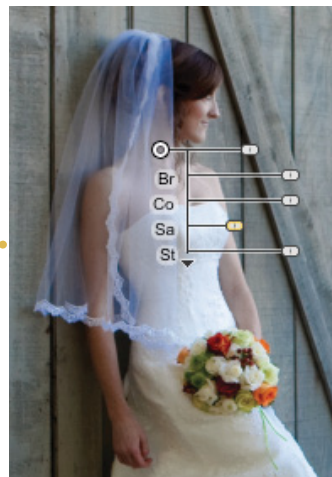
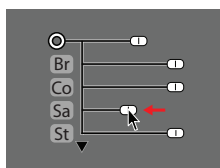
Before



After



First, a control point was added to the bride's veil by clicking on the Add Control Point button and then placing a control point on the veil.



Next, the enhancement sliders were used to correct the color cast. Since the veil is a neutral object, reducing the Saturation slider was enough to reduce the color cast. If the object with a color cast is not supposed to be neutral, the Red, Green, and Blue sliders can be used to provide more precision over the reduction of the color cast.